



**WATERLOO
MANUFACTURING**

COMPLETE BOILER ROOM SOLUTIONS

South West
505 Dotzert Court,
Unit 1
Waterloo, ON N2L 6A7

East
19 Grenfell Crescent, Bay 1
Ottawa (Nepean) ON
K2G 0G3

tel: 519 884 0600
fax: 519 884 0213
toll free: 1 800 265 8809
www.waterloomanufacturing.ca

tel: 613 228 3597
fax: 613 225 0116
toll free: 1 800 265 8809
www.waterloomanufacturing.ca

Looking For A Boiler Supply & Servicing Company With The Knowledge & Experience To Get It Right?

We are that company and we want to help you optimize your boiler room.

Established in 1850, Waterloo Manufacturing Ltd. has a long history of growth and evolution that continues to this day. In our early days we began as a manufacturer of farm machinery equipment, steam engines, pulp and paper rolls, and in 1947, became an authorized Cleaver Brooks Representative for South West Ontario. In 1984, we streamlined the company to further focus on solely providing boiler room equipment solutions in South West Ontario.

In 2015, a unique opportunity arose to expand our company to include the Eastern Ontario region formerly covered by John M. Schermerhorn Ltd.

In 2017, a further opportunity arose to expand our company to include the territory formerly represented by Johnson Paterson, Inc. to be the sole representative for Cleaver Brooks in the province of Ontario. *Refer to Map on Page 4.



We will soon be opening our 3rd Ontario location based in the Greater Toronto Area and we are looking forward to introducing ourselves to new customers, engineering firms, and contractors in the area previously serviced by Johnson Paterson, Inc. We are offering our services as a complete boiler room solution provider, focusing on addressing any efficiency, reliability, safety and sustainability concerns you may have.

Waterloo Manufacturing and Cleaver Brooks strive to become a trusted partner and advisor in each boiler plant by providing the equipment, resources and tools to assist in continuously maintaining and improving a safe, reliable, efficient and sustainable boiler room operation.

WATERLOO MANUFACTURING IS PROUD TO PROVIDE COMPLETE BOILER ROOM SOLUTIONS

Experience – 70 year business partner with Cleaver Brooks.








Our Services Include:

New Equipment Sales – Our sales team specialize in Steam, Hydronics, Conversions, Aftermarket, and Exhaust Solutions, drawing on decades of experience. Our team also has access to Cleaver Brooks product and sales engineers to ensure you get the right product to meet your needs.

THE FOLLOWING CHART OUTLINES THE CLEAVER BROOKS PRODUCTS OFFERED

Cleaver-Brooks Solutions Map

		Light Commercial	Commercial/ Institutional	Light Industrial	Industrial	Heavy Industrial	Power/Utility	Petrochemical/ Oil Sands	
End Markets	Healthcare Institutions								
	Government Institutions								
	Food/Beverage								
	Heating								
	Educational Institutions								
	Manufacturing								
	Energy								
	Rentals								
Capacity	MMBTU (input)	0.4	3	8	15	50	125	500	1,225
	BHP (BHP = 33,475 BTU/hr)	10	75	200	375	1,200	3,000	12,500	30,000
	lb Steam (BHP = 34.5 lb/hr)	350	2,600	7,000	13,000	40,000	100,000	425,000	1,000,000
	Kilowatts (kW)	12	800	2,100	3,900	12,000	29,900	126,900	298,500

	Boilers	Commercial							
		Flexible Watertube							
		Firetube							
		Electric/Electrode							
		Heat Recovery Steam Generator (HRSG)							
		Industrial Watertube							
	Burners	Commercial Burners							
		Industrial Burners							
		Special Applications Burners							
	Controls	Hydronic System Control							
		Falcon Control							
		Hawk Integrated Control							
	Heat Recovery	Stack Economizer							
		Two-Stage Condensing Economizer							
		Blowdown Heat Recovery Systems							
	Water Systems	Boiler Feed & Condensate Recovery Systems							
		Water Pre-Treatment Systems							
		Deaerators							
	Exhaust Solutions	Exhaust Stacks							
		Selective Catalytic Reduction (SCR)							
	Parts and Service	Service							
		Replacement Parts							
		Engineered Retrofit Solutions							

Parts – We currently have 2 parts warehouses in Ontario, with a 3rd location planned. Our service trucks are also well stocked to ensure a fast parts delivery. This along with access to the Cleaver Brooks Parts Distribution facility with over \$6 million dollars in inventory available to ship at a moments notice.



Service – Boiler and pressure vessel welding service staff with decades of experience; a fleet of fully equipped and well stocked service trucks; G1 and OB1 certified Cleaver Brooks Factory Trained technicians and Certified Welder on call 365/24/7. Fully supported by Cleaver Brooks Service Group and R&D product engineering. Our technicians are factory trained to service and commission full product range from 10 to 300,000 boiler horsepower.



Technical Solutions Specialist – RSE certified, currently the only Cleaver Brooks Certified Boiler Plant Optimization Specialist in Canada, former Cleaver Brooks long term Controls Product Manager, over 30 years industrial controls and communications experience.

Specialty Services – Boiler Plant Optimization Reviews, Thermal scanning, Operator training, extended submittal documentation.



Rental Boilers – Hydronic and Steam rental boilers are available for emergency or longer term rentals, delivered to your location and quickly installed.



**WATERLOO
MANUFACTURING**

COMPLETE BOILER ROOM SOLUTIONS

Phone: 519-884-0600 - Fax: 519-884-0213

Toll Free: 1-800-265-8809

505 Dotzert Crt., Unit 1, Waterloo, Ontario N2L 6A7

www.waterloomanufacturing.ca - e-mail: wmc5@watmfg.com

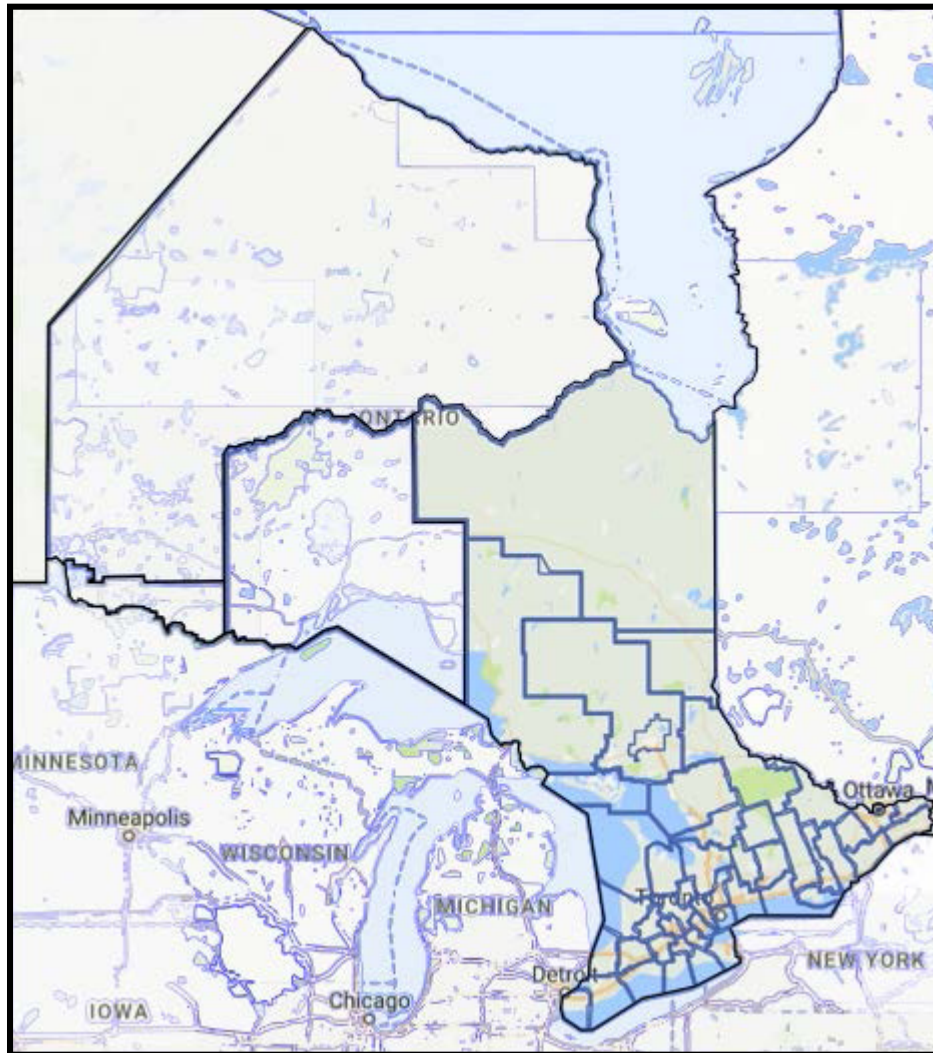
Phone: 613-228-3597 - Fax: 613-225-0116

19 Grenfell Cres., Bay 1, Ottawa (Nepean), Ontario, K2G 0G3

www.waterloomanufacturing.ca



Service Area



Ontario West

- Brant County
- Bruce County
- Dufferin County
- Elgin County
- Essex County
- Grey County
- Haldimand County
- Huron County
- Region of Halton
- Lambton County
- Middlesex County
- Region of Niagara
- Norfolk County
- Oxford County
- Perth County
- Simcoe County
- Region of Waterloo
- Wellington County
- Municipality of Hamilton-Wentworth
- Municipality of Chatham-Kent

Central Ontario

- Algoma District
- Cochrane District
- Durham County
- Haliburton County
- Hastings County
- Manitoulin Island
- Muskoka District
- Nipissing District
- Northumberland County
- Parry Sound District
- Peel County
- Peterborough County
- Prince Edward County
- Sudbury District
- Timiskaming District
- York County
- Victoria County

Ontario East

- Carleton County
- Dundas County
- Frontenac County
- Glengarry County
- United Counties of Leeds & Grenville
- Lanark County
- Lennox & Addington County
- Prescott County
- Renfrew County
- Russell County
- Stormont County
- Hull Section of Gatineau