



**Waterloo
Manufacturing**
Company Limited

Boiler News

Volume 1
Issue 1

March 2004

Waterloo Manufacturing Company Limited has been in the boiler industry since 1946 when we became a representative of Cleaver-Brooks packaged boiler manufacturers. There have been many changes since those early days, people, location, technology, fuels, emissions to name a few. This newsletter will be our format to convey information we feel would be useful to our customers, engineers and contractors. We will be able to communicate what's new with Waterloo Manufacturing and our suppliers and beyond.

First we would invite you to look into our new website located at www.waterloomanufacturing.ca. Here you can view our product information, contact the right person if you need information as well as look at upcoming events. As well you can give us feedback and you can also opt to receive an e-mail version of the newsletter.

Cleaver-Brooks Clearfire Condensing Boiler

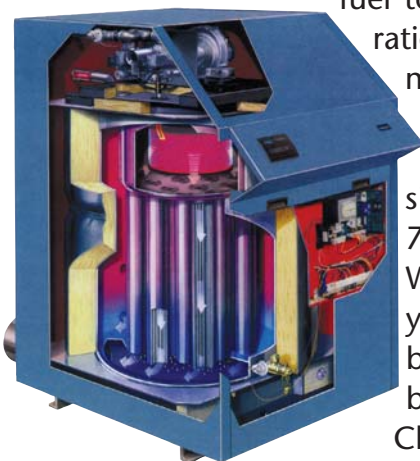
The Clearfire provides efficiencies to 98 percent with no minimum return water temperature or flow requirements.

This state-of-the-art unit has been designed with today's demand for high thermal efficiency, quick response and challenging system dynamics in mind.

With Clearfire, it begins with a uniquely rugged ASME constructed pressure vessel with stainless steel tube sheets and tubes with aluminum fins to enhance heat transfer.

The Clearfire fecralloy metal fibre burner has been specifically designed to premix the air and fuel to achieve a precise ratio resulting in optimum combustion efficiency.

The Clearfire has size ranges from 750 to 1800 MBH. When deciding on your next heating boiler to specify or buy, consider the Clearfire advantages.



Cleaver-Brooks Level Master

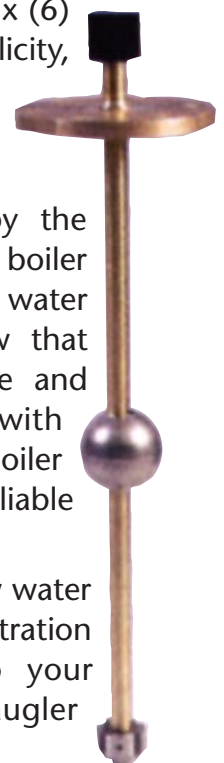
A new beginning in water level control

Much like how the CB780 Flame Safeguard controls the operation of the firing of the boiler, the Level Master controls the water levels of the boiler regardless of the firing rate.

The basis of the design for the new Level Master calls for the use of a microprocessor based control system which embraces six (6) important design criteria: Simplicity, Safety, Security, Dependability, Adaptability and Environmental Concerns.

The incident reports tracked by the National Board show 50% of all boiler occurrences are caused by low water cutoff failure. It's nice to know that Cleaver-Brooks is taking notice and providing the market place with improved products that provide boiler operators with a safer, more reliable and efficient operation.

To view the operation of this new water level control, we have a demonstration model that we can bring to your workplace. Contact Ken Naugler AfterMarket Sales.



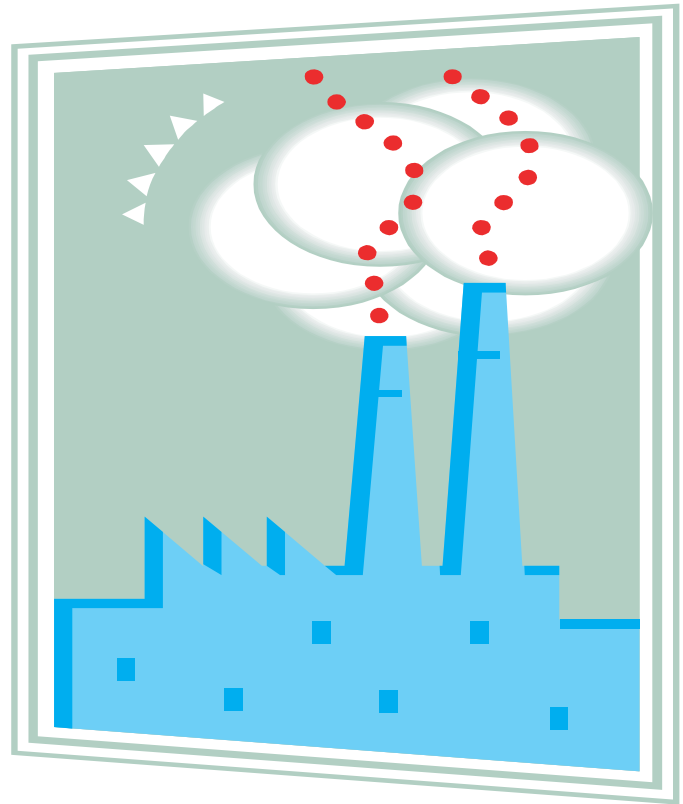
ONTARIO REGULATION 127/01 and KYOTO PROTOCOL

Ontario Regulation 127/01 made under the Environmental Protection Act requires owners and operators of commercial and industrial facilities to quantify and publicly report their air emissions from sources inclusive of natural gas combustion products from the operation of heating and production systems in excess of 3 million BTU/H.

Kyoto Protocol

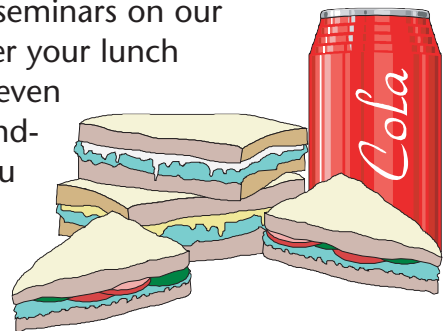
Canada is committed to reduce its annual greenhouse gas (GHG) emissions to 6 percent below 1990 levels during the period 2008 to 2012—a projected reduction of 240 megatonnes from 2010 business-as-usual levels.

These 2 governmental programs will greatly impact the emission targets facing business today. For more information or assistance, please contact Ken Naugler.



Lunch Information Seminars

Engineers - we know time is important but we all need to eat—with that in mind we are offering seminars on our products over your lunch hour—we'll even bring the sandwiches! If you have an interest give us a call.



**NEW
WEBSITE**

Contact us:

www.waterloomanufacturing.ca

Phone (519) 884-0600 • Fax (519) 884-0213

Toll free 1-800-265-8809